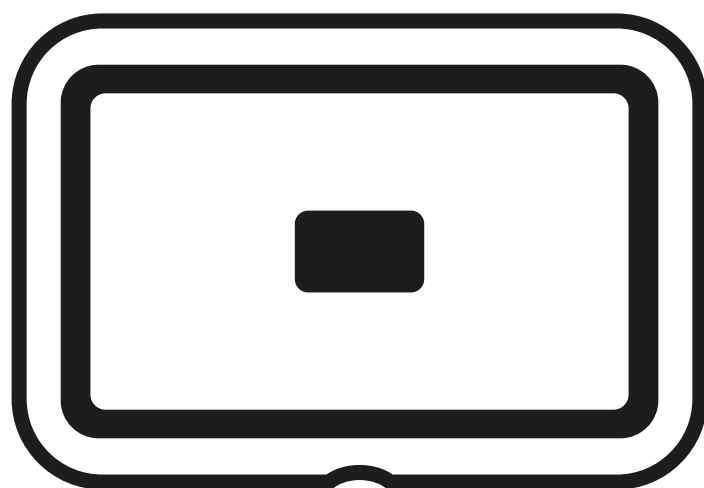


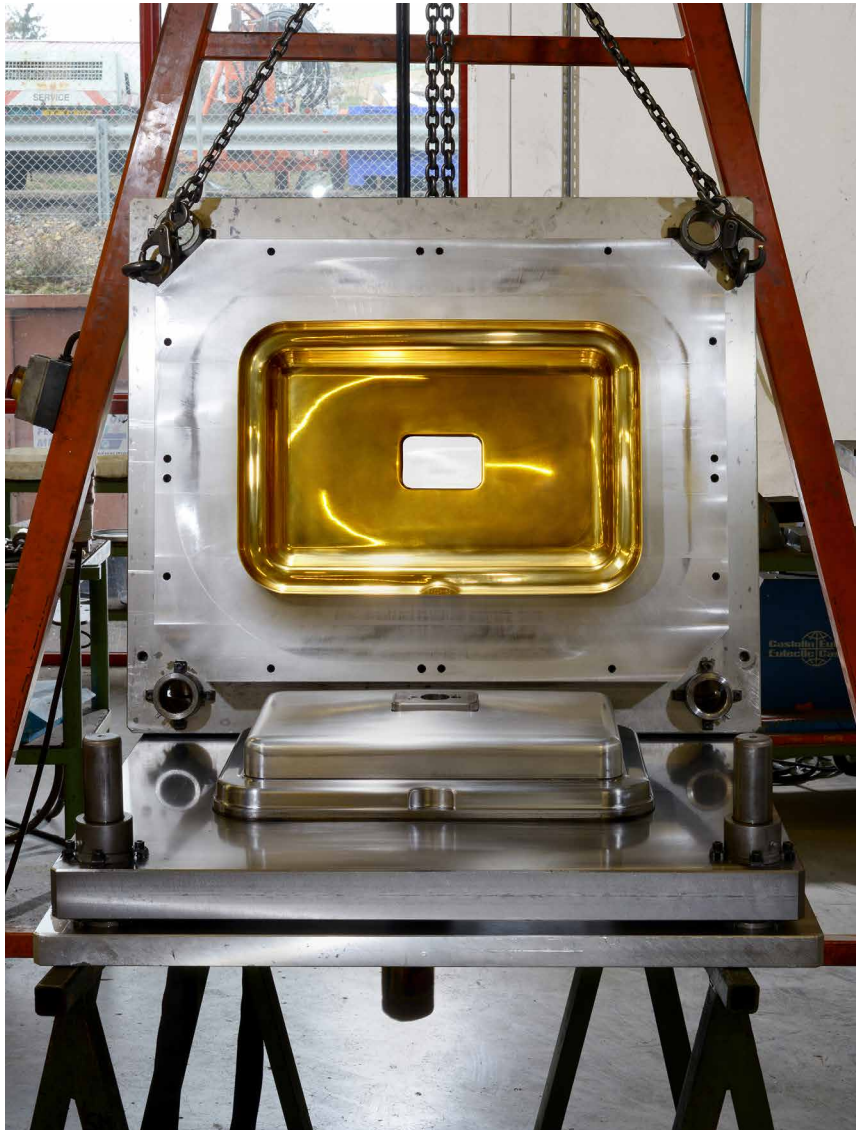
BASSINES

— FRANCE —



BASSINES

— FRANCE —



An industrial take on fine French copperware

www.bassines.com

BASSINES

— FRANCE —

GLOBAL LAUNCH OF AN EXCLUSIVE NEW BRAND

THE FOUNDERS

After creating the brand image of La Cornue, the luxury kitchen range manufacturer, Xavier Dupuy has set himself a new challenge: to modernize fine French copperware. This time his focus is the world of bathrooms, and the development of a unique brand of washbasins made exclusively of metal.

French copperware reached the height of its popularity in the early 20th century, but practically disappeared on the death of the renowned artist and craftsman Jean Dunand in the 1940s. Xavier Dupuy's goal is to revive the art of metalwork design and develop it abroad.

Forget the dated image of the old copper sink! Xavier Dupuy named his new brand Bassines but has reinvented that old-fashioned fixture, transforming it into a precious contemporary object.

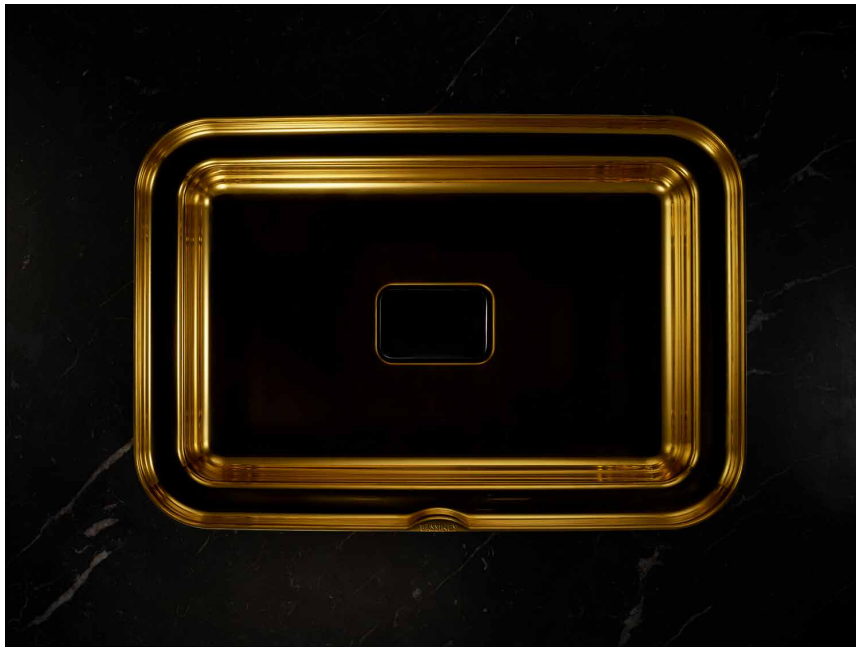
In tandem with his long-standing partner Laurent Besseas, a graduate of the École Boulle college of applied arts and design, and designer of the furniture collections for La Cornue, he wanted to produce a finely crafted everyday object on an industrial scale. The Bassines washbasins are highly technological objects designed using the best technical advances.

The hybrid product of a craft industry and French technology, Bassines was launched in January 2018 in Paris.

BASSINES

— FRANCE —

NARCIS



«Giving a unique look to an everyday object.»

BASSINES

— FRANCE —

COLLECTION NARCIS

DAZZLE

Bassine's founding collection is a tribute to its sole component: metal. Metal dazzles, metal reflects. We thought of Narcissus falling in love with his own reflection. The basins in the Narcis collection are reflecting surfaces that mirror the image of the person looking at them.

The Narcis collection revisits the old-fashioned basin, turning it into precious, contemporary object. Round or rectangular in shape, its finely crafted rim catches the eye and conjures up a sophisticated new world.

The generously sized rectangular basin is designed for greater comfort when you're at your mirror, while the round basin is ideal for smaller spaces.

INNOVATE

All washbasins are made out of an exceptional material – 316 stainless steel, the highest quality of metal substrate that exists, and which is resistant to corrosion. Its extraordinary surface serves as a perfect basis for specific treatment that follows.

Bassines applies a sophisticated coating technique used in the aeronautical industry. PVD or Phase Vapor Deposit coating is a vacuum process carried out in a chamber heated on very high temperature, where metallic vapor is deposited in a thin film on the stainless steel, bonding closely with it. The obtain hardness – seven times greater than normal – makes the metal permanently resistant to scratches. Enough to make even a perfectionist happy!

The basins are available in four finishes – stainless steel, gold, copper and black, in satin and brilliant versions.

SURPRISE

The stopper is the signature feature of the Narcis collection. It is a decorative element echoing the shape of the basin and providing a color combination: black/ gold, copper/stainless steel, stainless steel/black, gold/stainless steel etc. This juxtaposition of colors in the bowl and the stopper also sets the tone for the choice of faucet, and makes each washbasin unique.

BASSINES

— FRANCE —

Personalization is at the heart of this product: the stopper could be chased with guilloché patterns like those on a watch, or engraved with your name or that of the hotel. A metal plaque on the rim might feature the owner's name or add a custom touch. And how about basins for him and her?

But the stopper doesn't only add an aesthetic touch. Being designed for use in public places, it is also fitted with a sophisticated and discreet anti-theft device.

A DIFFERENT LOOK

To preserve the harmonious appearance of its basins, Bassines has invented an original overflow device. The patented Magic Over Flow system evacuates water discreetly via a hidden drain inside the basin.

Narcis basins can be installed in one of two ways: semi-recessed or countertop.

BASSINES

— FRANCE —

COLLECTION NARCIS

Colors: stainless steel, copper, gold, black

Finishes: polished / satin

Size rectangular model: 61 X 42 cm

Size round model: 43 cm diameter

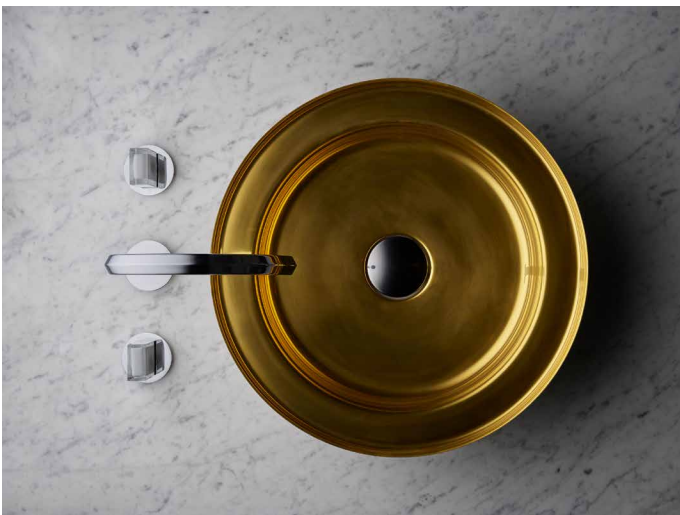
Installation: semi-recessed / countertop



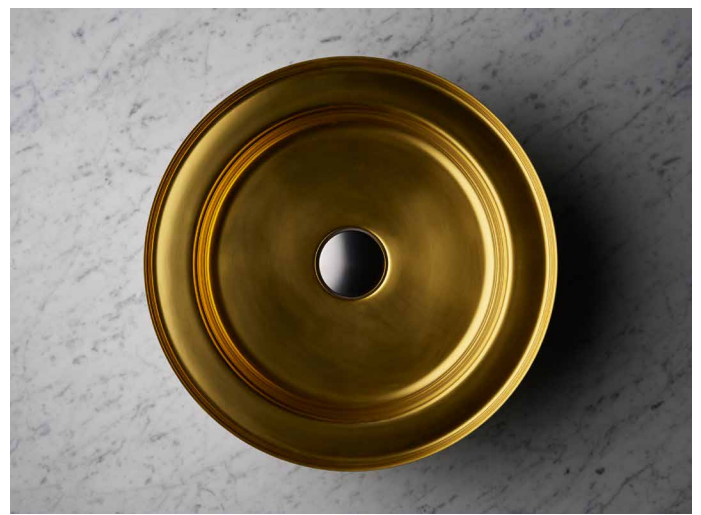
Collection : Narcis
Finish : black polished / trap gold



Collection : Narcis
Finish : black polished / personnalis  trap



Collection : Narcis
Finish : gold polished / trap black



Collection : Narcis
Finish : gold polished / trap black

BASSINES

— FRANCE —

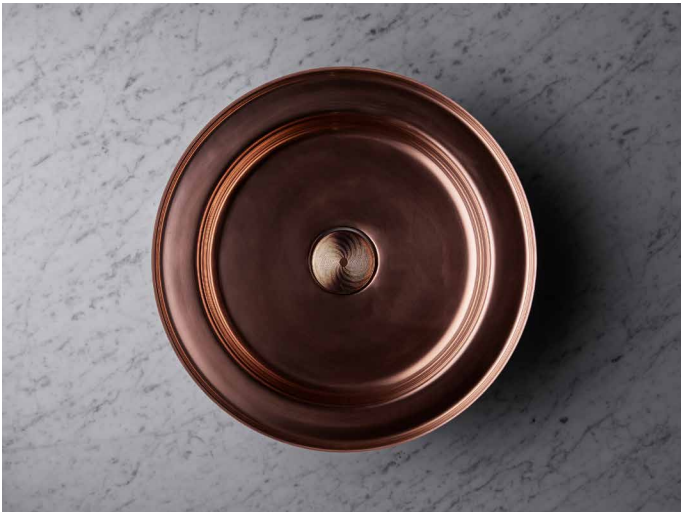
COLLECTION NARCIS



Collection : Narcis
Finish : copper polished / personnalisée trap in steel



Collection : Narcis
Finish : copper polished / personnalisée trap in steel



Collection : Narcis
Finish : copper polished / personnalisée trap in steel



Collection : Narcis
Finish : black polished / personnalisée trap in copper



Collection : Narcis
Finish : black polished / personnalisée trap in steel



Collection : Narcis
Finish : black polished / personnalisée trap in copper

BASSINES

— FRANCE —

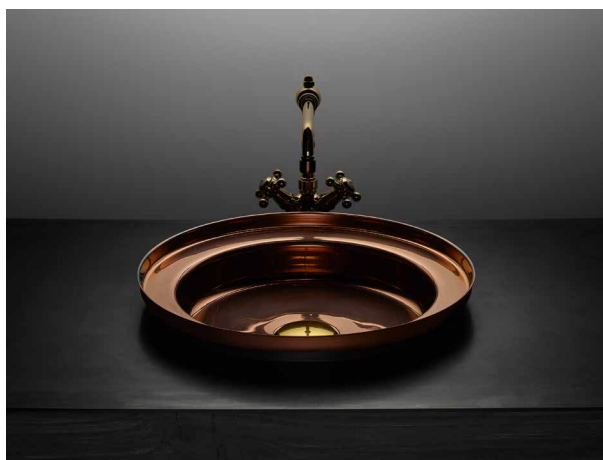
COLLECTION NARCIS



Collection : Narcis
Finish : black polished / trap copper



Collection : Narcis
Finish : gold polished / trap black



Collection : Narcis
Finish : copper polished / trap gold

BASSINES

— FRANCE —

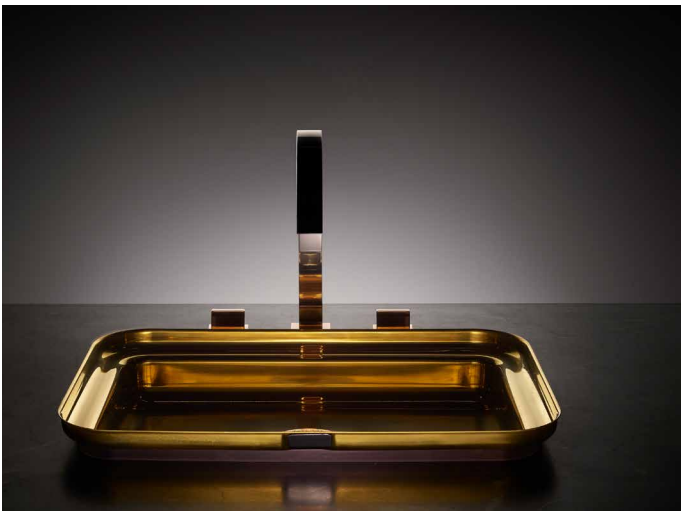
COLLECTION NARCIS



Collection : Narcis
Finish : black polished / trap gold



Collection : Narcis
Finish : steel mat/ trap gold



Collection : Narcis
Finish : gold polished / trap black

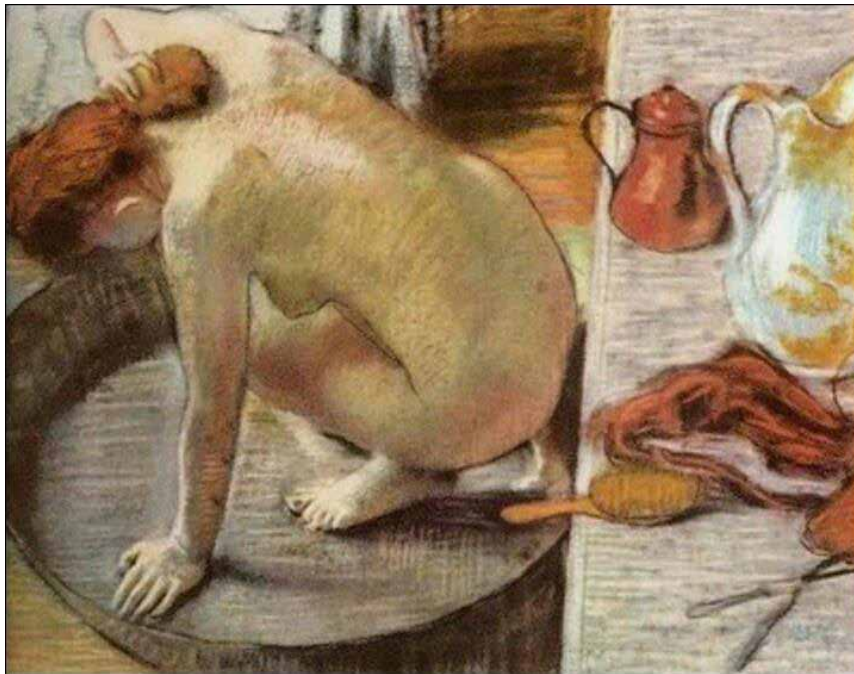


Collection : Narcis
Finish : steel polished / trap black

BASSINES

— FRANCE —

BARN



«Reinventing the archetypes.»

BASSINES

— FRANCE —

COLLECTION BARN

This collection revisits the shape of the rustic farmhouse basin, conjuring up romantic images of washhouses, public baths, and Toulouse-Lautrec's bathers.

The Barn gives a twist to this image with its sophisticated, luxurious design. The semi-spherical bowl with a brilliant, polished finish nestles in its rough cladding of wood, playing on the contrast of materials.

This basin features all of the Bassines technology, with PVD coating and the patented overflow device. Barn is available in various colors, including stainless steel, copper, gold and black, with a choice of woods for the cladding.

BASSINES

— FRANCE —

COLLECTION BARN

Colors: stainless steel, copper, gold, black

Finishes: polished / satin

Wood : oak, walnut

Size : 43 cm diameter

Installation: countertop



Collection : Barn

Finish : copper polished / trap black / oak

BASSINES

— FRANCE —

INTERVIEW WITH XAVIER DUPUY, the founder

After 30 years with La Cornue, why did you decide to launch a project that is so different in many respects, in terms of markets, company size and products?

After my 30-year stint with that prestigious French luxury house, I chose a very different project. But my values are still the same: a taste for beautiful, exceptional and timeless objects that will last longer than a lifetime, and for personalization in the smallest detail so as to feel entirely at home with them. Also the strength and presence of pure, solid metal.

Today, Bassines is offering an exceptional line of made-to-order metal washbasins with thin edges for bathrooms and other “wet rooms.” Nothing really exists in this field on the market, for the simple reason that it’s very complicated to produce in small quantities.

Why did you choose the name Bassines ?

I wanted a brand name that was simple and easy to memorize in relation to its concept and identity. I wanted something that sounded French but that would also work in English-speaking cultures.

I wanted this name to reflect the combination of French heritage and 21st-century design that we want to embody. Bassines is a nod to the traditional metal farmhouse pan, in a precious, contemporary form that produces an element of surprise.

What does Bassines bring to the existing micro-market of metal basins?

Bassines is an event in a micro-market where nothing has happened for 40 or 50 years. We have changed everything: the shapes, the materials, the surface finishes, the technology, the personalization and the image, thanks to our strong design.

What’s more, Bassines is 100% innovative when it comes to enjoying the countless qualities of metal without any of its downsides.

What markets are you targeting?

Exceptional markets, I would call them, a tad provocatively, but on a global scale these can be quite substantial ones. We are interested in all private projects: Premium +, luxury hotels, spas and sports centers looking for something different from the vast and familiar array of bathroom fittings that are available today.

BASSINES

— FRANCE —

Installing a Bassines washbasin transforms a bathroom or cloakroom into an exceptional, eye-catching setting, through its presence, its reflections and its comfortable shape and size.

We strive to achieve this spectacular result, which will retain its visual appeal without the least wear and tear, even after decades of intensive use.

The aesthetic concept of the project is very clear, but where is the innovation?

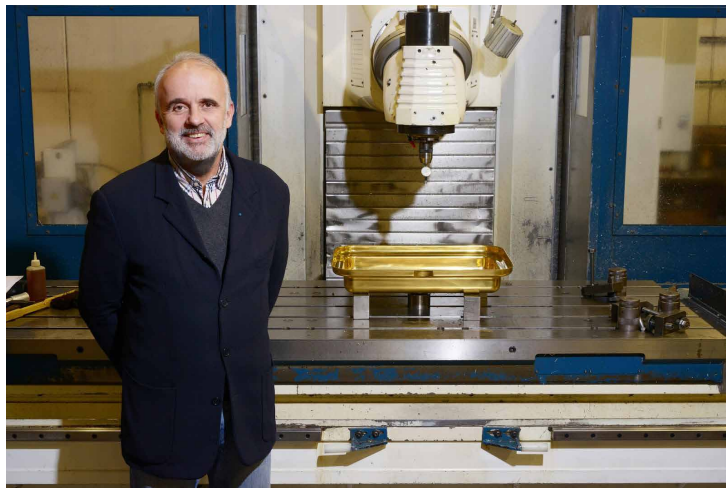
Innovation is everywhere at Bassines. We are the owners of our basin molds, which are patented designs. We apply a surface treatment, using a high-temperature vacuum process, to a very hard metal, 316 stainless steel, rendering it seven times more resistant. This special treatment eliminates all the disadvantages of metal, making it permanently scratch-proof and rustproof while retaining its shine.

We have also invented an invisible overflow device (patent pending).

What are your plans for development?

Firstly, my associate Laurent Besseas and I want to promote our brand's first bathroom products, including the Narcis and Barn collections, and make it a benchmark in this niche product sector.

In a year or two we may go on to produce original, elegant kitchen sinks – but to quote Aristotle: “well begun is half done.”



BASSINES

— FRANCE —

CONTACT

BASSINES

Xavier Dupuy & Laurent Besseas
www.bassines.com

PRESS / PROFESSIONALS

Agence MKGB / Masha Kontchakova
macha@mkgb.net / +33 (07) 61 02 60 68